

simalube – the automatic single-point lubricator

Technical information for the recycling industry



simalube[®]
smart lubrication

The lubrication expert

simalube reduces maintenance costs and downtimes

The application of simalube lubricators greatly extends the service life of components such as bearings, chains, gearwheels, conveyors and other mechanical pieces. The reduction of maintenance needs and downtimes also leads to a reduction of overall costs.

In recycling factories where lots of dust and dirt is present, regular lubrication is important. Badly lubricated components can be quickly damaged and must then be replaced. This leads to interruptions in production and higher costs.

Minimize dangers and prevent accidents

The simalube lubricator is ideal for use with hard to reach lubrication points. The lubricator also automatically and reliably lubricates exposed lubrication points. Periodic manual lubrication of machines with a grease gun is no longer necessary. When simalube lubricators are installed, workers spend much less time in danger zones. The maintenance personnel have less exposure to noise, dust and the danger of rotating machine parts, which increases workplace safety.

«simalube lubricates continuously, extends the service life of production machines and reduces maintenance costs»

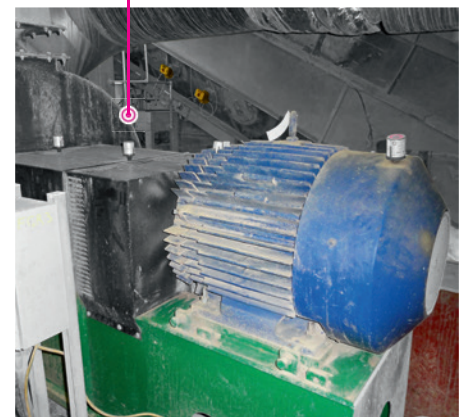
«simalube increases employee safety in factories»



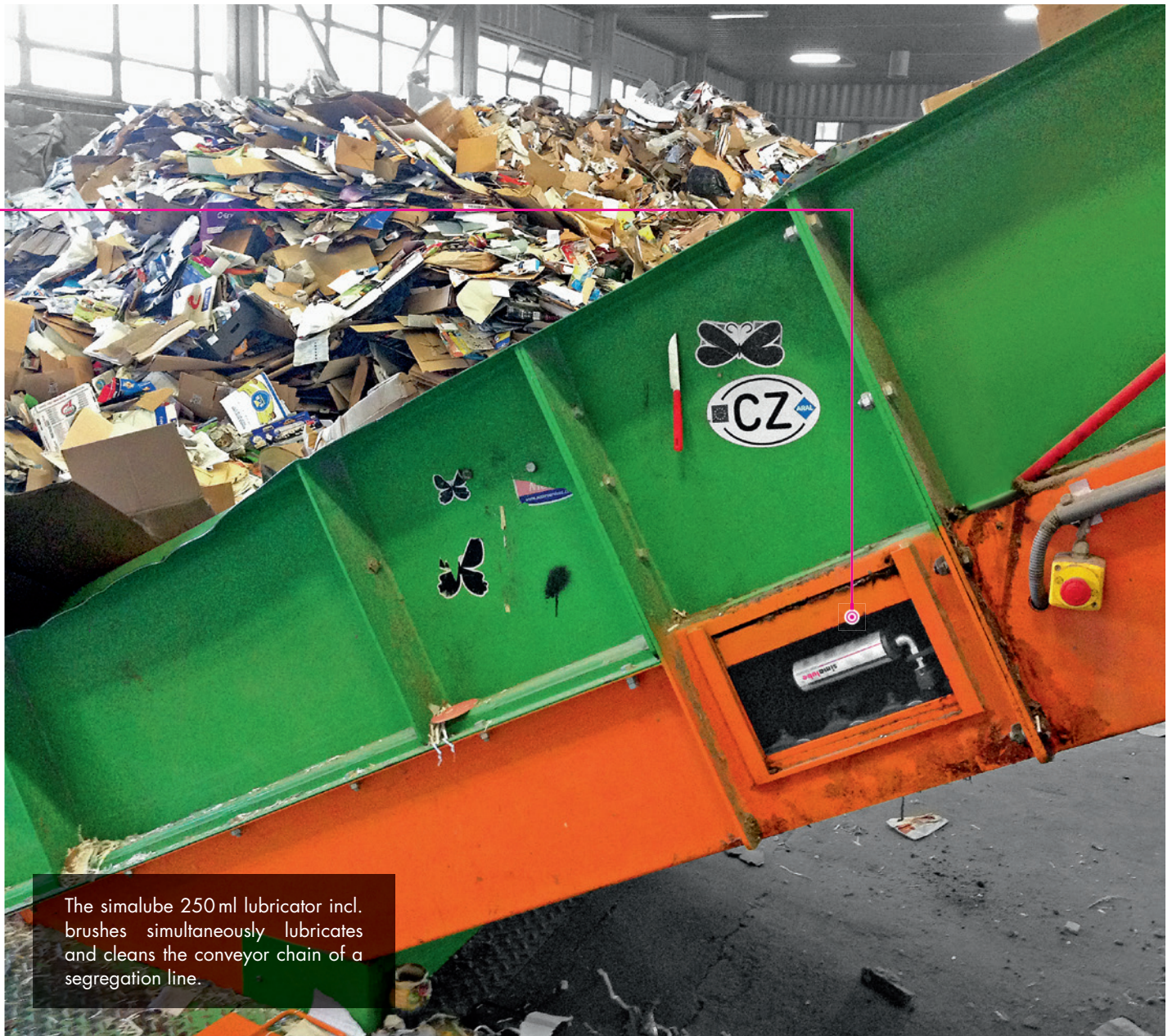
The externally installed simalube prevents dirt from entering the lubrication point.



A combustion fan lubricated with two 60 ml and two 125 ml simalube lubricators.



The FGR ventilator is lubricated by simalube 60 ml.



The simalube 250 ml lubricator incl. brushes simultaneously lubricates and cleans the conveyor chain of a segregation line.



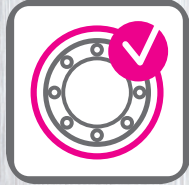
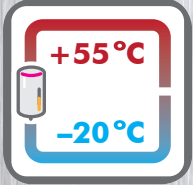
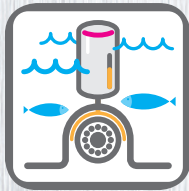
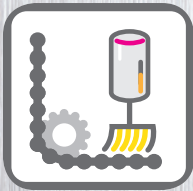
Dozens of 30 ml simalube lubricators provide the bearings of a conveyor belt with the necessary lubricant.



simalube lubricates bearings on a conveyor belt.



A vibrating conveyor lubricated by several 125 ml simalube lubricators.



Applications and advantages

simalube applications in recycling plants:

- Conveyor belts
- Sorters
- Crushers
- Ventilation fans
- Shredders
- Sorting machines
- Presses
- Washing machines
- Mills
- Winnowing machines
- Combustion fan

Advantages of the simalube lubrication system:

- Reliable lubrication system in the recycling industry
- Reduction of service requirements and maintenance costs: because manual lubrication is no longer necessary, less labour is required and time savings are great
- Shutting down the machines for maintenance is no longer necessary
- Longer service life of machines thanks to continuous and precise lubrication
- Flexibility: The running time is adjustable from 1–12 months
- Only one type of lubricator is needed per application. This reduces storage costs
- Once the simalube is installed, the lubrication point is reliably lubricated and never forgotten
- Thanks to the transparent housing, the progress of the lubrication process can be monitored at all times (fill level control)
- Available in 5 sizes: 15, 30, 60, 125, and 250 ml, plus multipoint
- Simple, environmentally-friendly disposal (100% recyclable)
- The hermetically sealed system prevents contamination by dust and debris (IP68)



We will gladly inform you about the application of simalube products in the recycling industry.

Our highly-qualified specialists have an in-depth technical knowledge and will show you how automatic lubrication can reduce costs and extend the service life of your machines.

simatec ag

Stadthof 2
 CH-3380 Wangen a. Aare
 Tel.: +41 (0)32 636 50 00
 Fax: +41 (0)32 636 50 19
 welcome@simatec.com
 www.simatec.com