

simalube – the automatic single-point lubricator

Technical information for the wood processing industry



simalube[®]
smart lubrication

The lubrication expert

simalube is extremely reliable and flexible and enables a high level of machine output

In wood processing companies, there is often a huge amount of dirt and dust that cause a permanent build-up of dirt on the ball bearing. Early bearing damage can occur that leads to a considerably lower machine output. For this reason, it is particularly important to lubricate the bearings in a reliable, precise manner. The simalube automatic lubricator ensures that the exact amount of lubricant – grease or oil – is applied to the lubrication point, thus avoiding excess or deficient lubrication. Thanks to the hermetically sealed system of the simalube lubricator, dirt is also prevented from penetrating into the roller bearings, thus avoiding bearing damage at an early stage. The negligible downtimes and maintenance required also allows a huge saving of costs.

Reduced risks of accidents in the workplace thanks to simalube

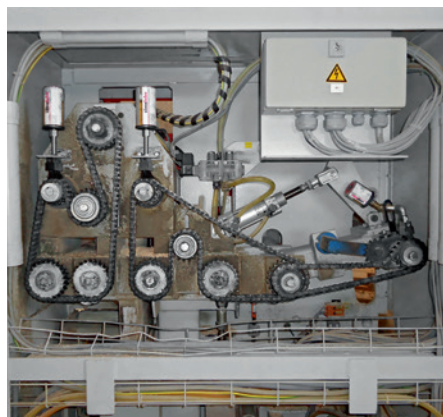
Due to the compact dimensions of the simalube lubricator, it can be installed in even the narrowest of spaces, making it possible to cater for even the most inaccessible lubrication points. This minimises the time needed for workers to linger in the danger zones and increases safety in the workplace. The elimination of manual lubrication also leads to a considerable saving of time, as all lubrication points are now lubricated automatically over a period of 1 to 12 months.

«simalube lubricates bearings continuously, lengthens the service life of machinery and reduces maintenance costs in every wood processing company»

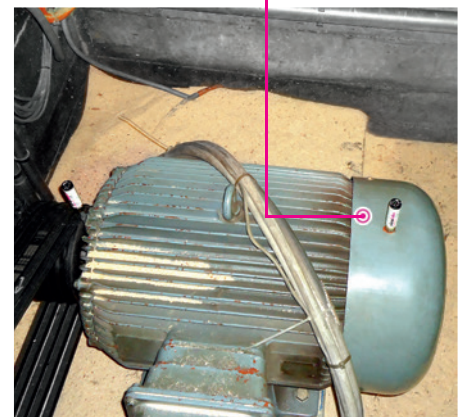
«Considerable saving of time and improved safety in the workplace thanks to automatic lubrication»



The bearings of a vibration channel are lubricated continuously by three lubricators.



The chains of a cross-cut machine with roll feed are permanently lubricated using three simalube lubricators fitted with brushes and cleaned at the same time.



The electric motor of a chipping machine is lubricated in a sawmill.



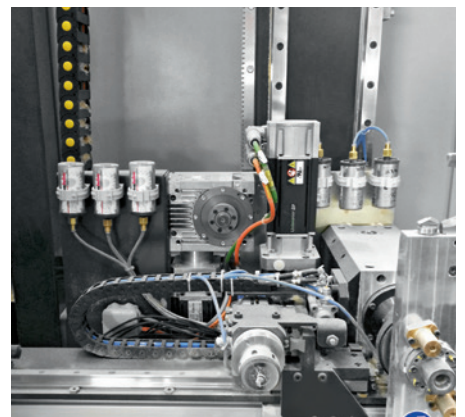
Optimum lubrication of roller bearings thanks to a 125 ml simalube cartridge, which rotates together with the bearings on the sheet rollers of a band saw.



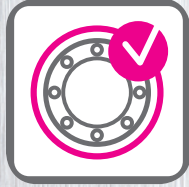
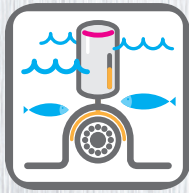
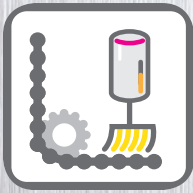
The spindle of a circular saw is reliably lubricated with two 125 ml simalube cartridges.



The Y-ball-bearing unit of a conveyor belt is continuously supplied with lubricant.



Six lubricators apply the right amount of lubricant to the linear guides of an assembly system.



Applications and advantages

simalube applications in the wood processing industry:

- Conveyor systems
- Track rollers
- Chipping systems
- Drives/motors
- Spindles/ducts
- Transportation systems
- Vibration channels
- Trimming systems
- Loading cranes
- Saws of all types
- Debarking systems
- Conveyor chains

Advantages of the simalube lubrication system:

- Tried and tested lubrication system in the wood processing industry
- Reliability: Once installed, the lubrication points are reliably lubricated and never forgotten
- The hermetically sealed system prevents contamination by dust and debris (IP68)
- Reduction of service requirements and maintenance costs: Manual lubrication is no longer necessary meaning fewer disruptions and a huge saving of time
- Longer service life of machines thanks to continuous and accurate lubrication
- Flexibility: The running time is adjustable from 1–12 months
- No need to shut down the machines during maintenance
- Available in five sizes: 15, 30, 60, 125 and 250 ml, plus multipoint
- Thanks to the transparent housing, the progress of the lubrication process can be monitored at all times (fill level control)
- Installation is possible even in very narrow spaces
- Simple, environmentally-friendly disposal (100% recyclable)



We will gladly inform you about the application of simalube products in the wood industry.

Our highly-qualified specialists have an in-depth technical knowledge and will show you how automatic lubrication can reduce costs and extend the service life of your machines.

simatec ag

Stadthof 2

CH-3380 Wangen a. Aare

Tel.: +41 (0)32 636 50 00

Fax: +41 (0)32 636 50 19

welcome@simatec.com

www.simatec.com

simatec
smart technologies