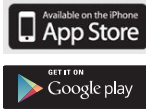


simalube IMPULSE quick instruction guide for installation, removal, refill and disposal

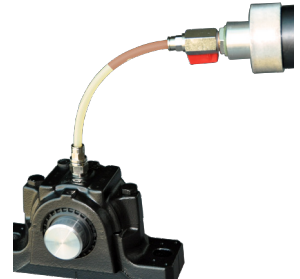
Calculation and preparation of lubrication point



Clean lubrication point



Remove connector nipple and screw in quick connection coupling

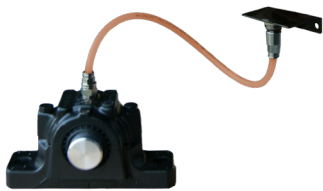


Connect hose and refill with a grease gun (fill tubes completely)

Use „Calculation Pro“ to choose correct dispensing time and lubricator size.

(*Calculation Pro* is available at www.simatec.com, in the App Store, and in the Android Market.)

Install and activate simalube and IMPULSE



Connect hose to mounting bracket



Seal IMPULSE and screw onto lubrication point

i IMPULSE logo must face the front



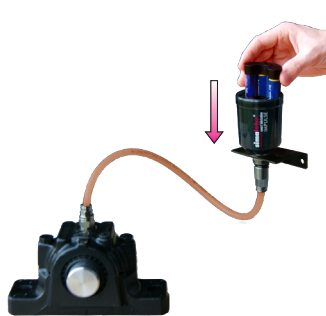
Cut off plug from lubricator or remove black plug



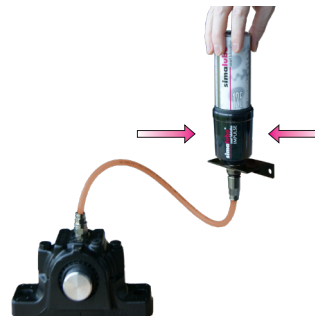
Activate calculated dispensing time with 3 mm Allen key



Write in activation date



Insert the battery pack



Screw on lubricator, device will be activated, green LED will blink 2x. **i** The first pump cycle will begin within 30 seconds

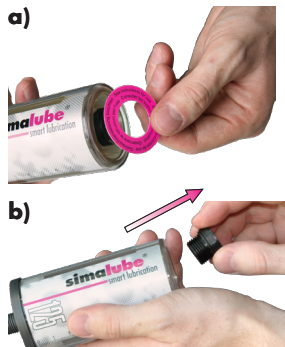


Check simalube and IMPULSE regularly

Replace and recycle the lubricator



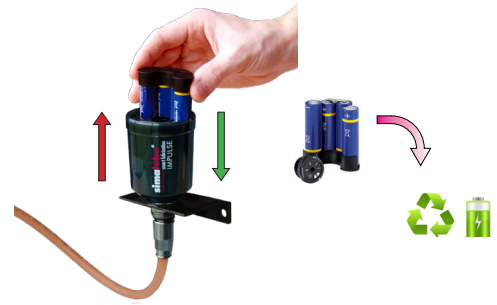
Replace or refill the empty lubricator



a) Remove cover disk
b) Remove gas generator with a socket wrench (SW21 mm)

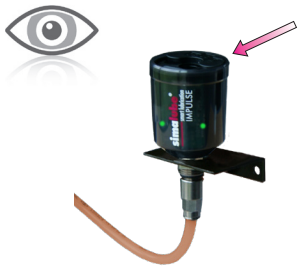


Dispose of intact gas generator in battery recycling and empty housing in plastic recycling.
(Warning: dispose of leftover grease separately)



Remove the used battery pack and replace it with a new one

Put IMPULSE with new lubricator into operation



Check and clean the gasket
i IMPULSE remains on lubrication point



Screw refilled or new lubricator onto the lubrication point

Period of use of the simalube IMPULSE:

10x simalube dispensing cycles

or

3 years from the production date

